

測試報告 Test Report

號碼(No.) : KA/2015/31074

日期(Date) : 2015/03/25

頁數(Page): 1 of 6

鈺錡實業有限公司

YAH CHI INDUSTRIAL CO., LTD.

(50055)彰化市平安街156號

NO.156, PING-AN ST., CHANGHUA CITY, CHANGHUA COUNTY 500, TAIWAN (R.O.C.)

以下測試樣品係由客戶送樣，且由客戶聲稱並經客戶確認如下 (The following samples was/were submitted and identified by/on behalf of the client as) :

樣品名稱(Sample Description) : PVC 吸盤/PVC SUCTION CUP

收件日期(Sample Receiving Date) : 2015/03/18

測試期間(Testing Period) : 2015/03/18 TO 2015/03/25

送樣廠商(Sample Submitted By) : 鈺錡實業有限公司 (YAH CHI INDUSTRIAL CO., LTD.)

=====
測試需求(Test Requested) : 依據客戶要求，參考RoHS 2011/65/EU Annex II 指令進行鎘，鉛，汞，六價鉻，多溴聯苯，多溴聯苯醚測試。(As specified by client, with reference to RoHS Directive 2011/65/EU Annex II to determine Cadmium, Lead, Mercury, Cr(VI), PBBs, PBDEs contents in the submitted sample.)

測試方法(Test Method) : 請見下一頁 (Please refer to next pages).

測試結果(Test Results) : 請見下一頁 (Please refer to next pages).



Ray Chang, Ph.D. / Manager-Technical
Signed for and on behalf of
SGS Taiwan Limited
Chemical Laboratory-Kaohsiung

測試報告 Test Report

號碼(No.) : KA/2015/31074

日期(Date) : 2015/03/25

頁數(Page): 2 of 6

鈺錡實業有限公司

YAH CHI INDUSTRIAL CO., LTD.

(50055)彰化市平安街156號

NO.156, PING-AN ST., CHANGHUA CITY, CHANGHUA COUNTY 500, TAIWAN (R.O.C.)

測試結果(Test Results)

測試部位(PART NAME)No.1 : 透明 PVC 吸盤/PVC SUCTION CUP (TRANSPARENT PVC 吸盤/PVC SUCTION CUP)

測試項目 (Test Items)	單位 (Unit)	測試方法 (Method)	方法偵測 極限值 (MDL)	結果 (Result)
				No.1
鎘 / Cadmium (Cd)	mg/kg	參考 IEC 62321-5: 2013 方法, 以感應耦合電漿原子發射光譜儀檢測. / With reference to IEC 62321-5: 2013 and performed by ICP-AES.	2	n.d.
鉛 / Lead (Pb)	mg/kg	參考 IEC 62321-5: 2013 方法, 以感應耦合電漿原子發射光譜儀檢測. / With reference to IEC 62321-5: 2013 and performed by ICP-AES.	2	n.d.
汞 / Mercury (Hg)	mg/kg	參考 IEC 62321-4: 2013 方法, 以感應耦合電漿原子發射光譜儀檢測. / With reference to IEC 62321-4: 2013 and performed by ICP-AES.	2	n.d.
六價鉻 / Hexavalent Chromium Cr(VI)	mg/kg	參考 IEC 62321: 2008 方法, 以 UV-VIS 檢測. / With reference to IEC 62321: 2008 and performed by UV-VIS.	2	n.d.
多溴聯苯總和 / Sum of PBBs	mg/kg	參考 IEC 62321: 2008 方法, 以氣相層析/質譜儀檢測. / With reference to IEC 62321: 2008 and performed by GC/MS.	-	n.d.
一溴聯苯 / Monobromobiphenyl	mg/kg		5	n.d.
二溴聯苯 / Dibromobiphenyl	mg/kg		5	n.d.
三溴聯苯 / Tribromobiphenyl	mg/kg		5	n.d.
四溴聯苯 / Tetrabromobiphenyl	mg/kg		5	n.d.
五溴聯苯 / Pentabromobiphenyl	mg/kg		5	n.d.
六溴聯苯 / Hexabromobiphenyl	mg/kg		5	n.d.
七溴聯苯 / Heptabromobiphenyl	mg/kg		5	n.d.
八溴聯苯 / Octabromobiphenyl	mg/kg		5	n.d.
九溴聯苯 / Nonabromobiphenyl	mg/kg		5	n.d.
十溴聯苯 / Decabromobiphenyl	mg/kg	5	n.d.	

Unless otherwise stated the results shown in this test report refer only to the sample(s) tested. This test report cannot be reproduced, except in full, without prior written permission of the Company. 除非另有說明, 此報告結果僅對測試之樣品負責。本報告未經本公司書面許可, 不可部分複製。
This document is issued by the Company subject to its General Conditions of Service printed overleaf, available on request or accessible at www.sgs.com/terms_and_conditions.htm and, for electronic format documents, subject to Terms and Conditions for Electronic Documents at www.sgs.com/terms_e-document.htm. Attention is drawn to the limitation of liability, indemnification and jurisdiction issues defined therein. Any holder of this document is advised that information contained hereon reflects the Company's findings at the time of its intervention only and within the limits of Client's instructions, if any. The Company's sole responsibility is to its Client and this document does not exonerate parties to a transaction from exercising all their rights and obligations under the transaction documents. This document cannot be reproduced except in full, without prior written approval of the Company. Any unauthorized alteration, forgery or falsification of the content or appearance of this document is unlawful and offenders may be prosecuted to the fullest extent of the law.

測試報告

Test Report

號碼(No.) : KA/2015/31074

日期(Date) : 2015/03/25

頁數(Page): 3 of 6

銜錡實業有限公司

YAH CHI INDUSTRIAL CO., LTD.

(50055)彰化市平安街156號

NO.156, PING-AN ST., CHANGHUA CITY, CHANGHUA COUNTY 500, TAIWAN (R.O.C.)

測試項目 (Test Items)	單位 (Unit)	測試方法 (Method)	方法偵測 極限值 (MDL)	結果 (Result)
				No.1
多溴聯苯醚總和 / Sum of PBDEs	mg/kg	參考IEC 62321: 2008方法, 以氣相層析/質譜儀檢測. / With reference to IEC 62321: 2008 and performed by GC/MS.	-	n.d.
一溴聯苯醚 / Monobromodiphenyl ether	mg/kg		5	n.d.
二溴聯苯醚 / Dibromodiphenyl ether	mg/kg		5	n.d.
三溴聯苯醚 / Tribromodiphenyl ether	mg/kg		5	n.d.
四溴聯苯醚 / Tetrabromodiphenyl ether	mg/kg		5	n.d.
五溴聯苯醚 / Pentabromodiphenyl ether	mg/kg		5	n.d.
六溴聯苯醚 / Hexabromodiphenyl ether	mg/kg		5	n.d.
七溴聯苯醚 / Heptabromodiphenyl ether	mg/kg		5	n.d.
八溴聯苯醚 / Octabromodiphenyl ether	mg/kg		5	n.d.
九溴聯苯醚 / Nonabromodiphenyl ether	mg/kg		5	n.d.
十溴聯苯醚 / Decabromodiphenyl ether	mg/kg		5	n.d.

備註(Note) :

1. mg/kg = ppm ; 0.1wt% = 1000ppm
2. n.d. = Not Detected (未檢出)
3. MDL = Method Detection Limit (方法偵測極限值)
4. "-" = Not Regulated (無規格值)

測試報告 Test Report

號碼(No.) : KA/2015/31074

日期(Date) : 2015/03/25

頁數(Page): 4 of 6

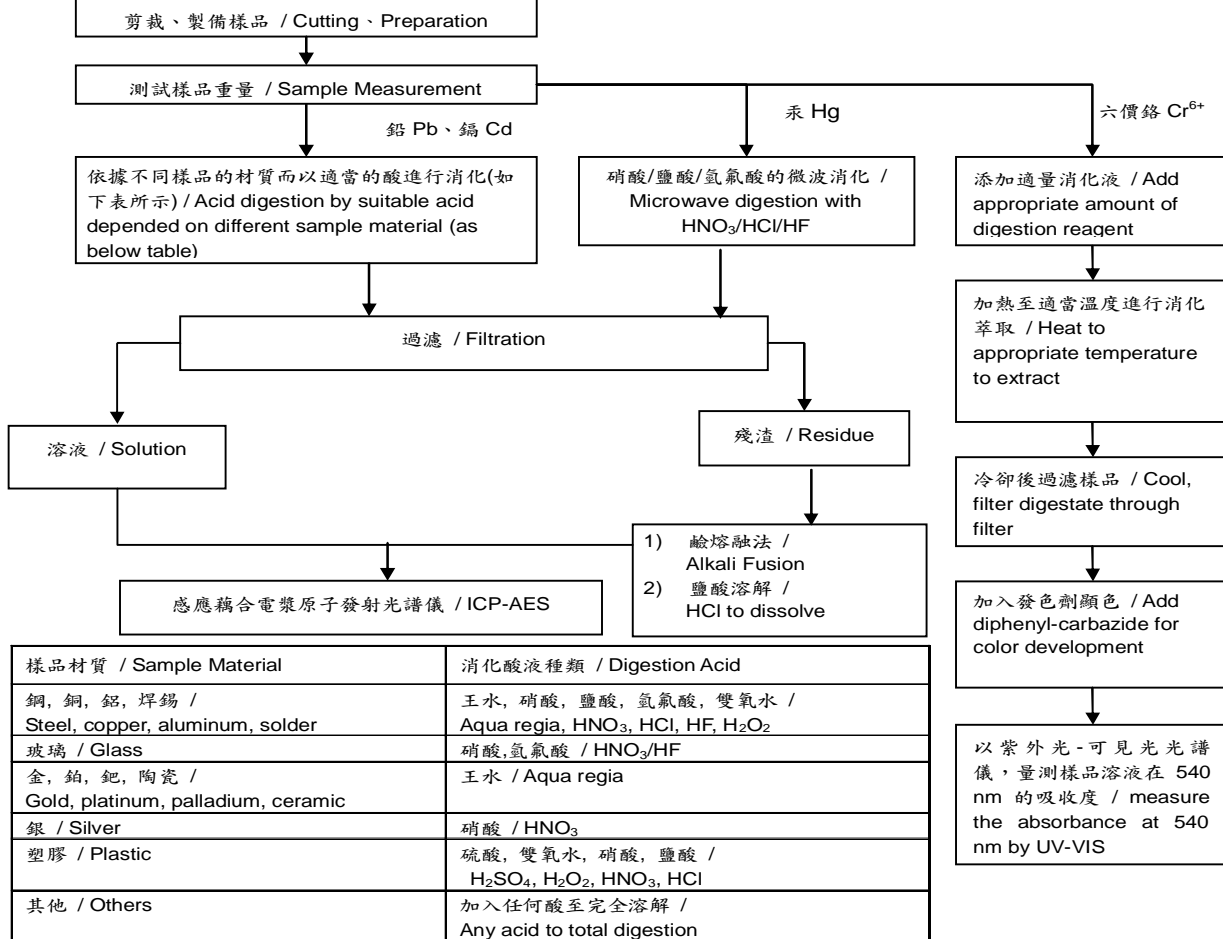
銜錡實業有限公司

YAH CHI INDUSTRIAL CO., LTD.

(50055)彰化市平安街156號

NO.156, PING-AN ST., CHANGHUA CITY, CHANGHUA COUNTY 500, TAIWAN (R.O.C.)

- 1) 根據以下的流程圖之條件，樣品已完全溶解。(六價鉻測試方法除外) / These samples were dissolved totally by pre-conditioning method according to below flow chart. (Cr⁶⁺ test method excluded)
- 2) 測試人員：劉俊宏 / Name of the person who made measurement: Jony Liu
- 3) 測試負責人：張伯睿 / Name of the person in charge of measurement: Ray Chang



- Note** :** (1) 針對非金屬材料加入鹼性消化液，加熱至 90~95℃ 萃取。 / For non-metallic material, add alkaline digestion reagent and heat to 90~95℃.
- (2) 針對金屬材料加入純水，加熱至沸騰萃取。 / For metallic material, add pure water and heat to boiling.

測試報告 Test Report

號碼(No.) : KA/2015/31074

日期(Date) : 2015/03/25

頁數(Page): 5 of 6

銜錡實業有限公司

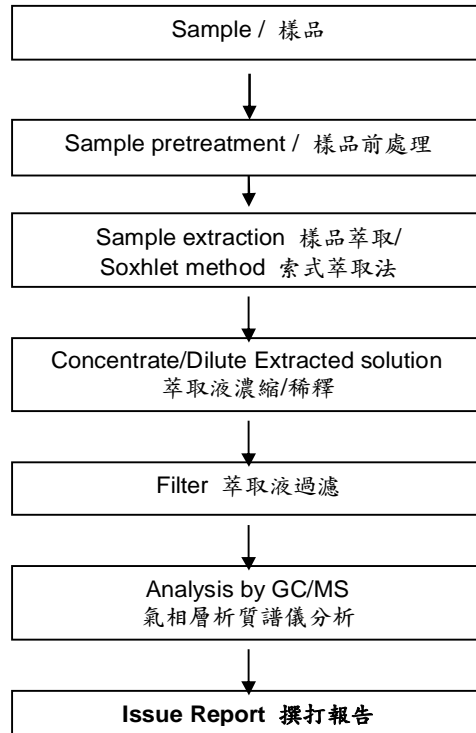
YAH CHI INDUSTRIAL CO., LTD.

(50055)彰化市平安街156號

NO.156, PING-AN ST., CHANGHUA CITY, CHANGHUA COUNTY 500, TAIWAN (R.O.C.)

多溴聯苯/多溴聯苯醚 分析流程圖 / PBB/PBDE analytical FLOW CHART

- 1)測試人員：陳威錚 / Name of the person who made measurement: Dorothy Chen
2)測試負責人：張伯睿 / Name of the person in charge of measurement: Ray Chang



Unless otherwise stated the results shown in this test report refer only to the sample(s) tested. This test report cannot be reproduced, except in full, without prior written permission of the Company. 除非另有說明，此報告結果僅對測試之樣品負責。本報告未經本公司書面許可，不可部分複製。
This document is issued by the Company subject to its General Conditions of Service printed overleaf, available on request or accessible at www.sgs.com/terms_and_conditions.htm and, for electronic format documents, subject to Terms and Conditions for Electronic Documents at www.sgs.com/terms_e-document.htm. Attention is drawn to the limitation of liability, indemnification and jurisdiction issues defined therein. Any holder of this document is advised that information contained hereon reflects the Company's findings at the time of its intervention only and within the limits of Client's instructions, if any. The Company's sole responsibility is to its Client and this document does not exonerate parties to a transaction from exercising all their rights and obligations under the transaction documents. This document cannot be reproduced except in full, without prior written approval of the Company. Any unauthorized alteration, forgery or falsification of the content or appearance of this document is unlawful and offenders may be prosecuted to the fullest extent of the law.

測試報告 Test Report

號碼(No.) : KA/2015/31074

日期(Date) : 2015/03/25

頁數(Page): 6 of 6

銓錡實業有限公司

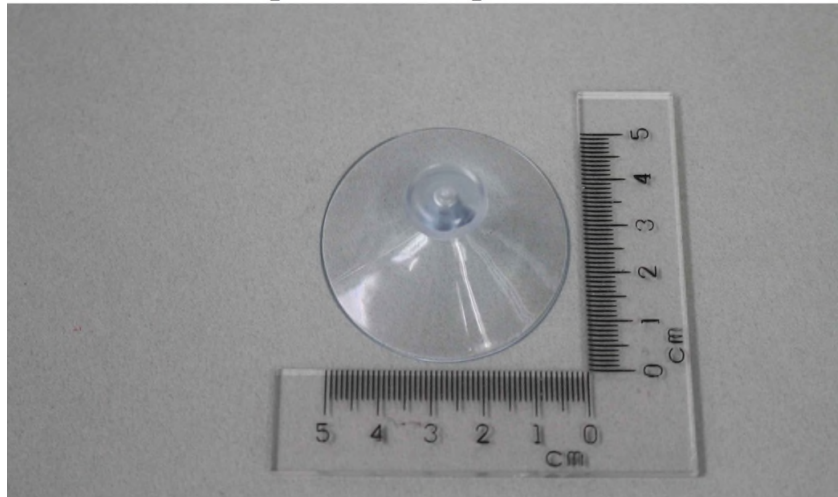
YAH CHI INDUSTRIAL CO., LTD.

(50055)彰化市平安街156號

NO.156, PING-AN ST., CHANGHUA CITY, CHANGHUA COUNTY 500, TAIWAN (R.O.C.)

* 照片中如有箭頭標示，則表示為實際檢測之樣品/部位。*
(The tested sample / part is marked by an arrow if it's shown on the photo.)

KA/2015/31074



** 報告結尾 (End of Report) **